

Polyplaster™ | Acrylic Bubble Finish Exotic Texture

DESCRIPTION

Jotex Polyplaster is a superior quality surface coating, with copolymer Binders, with selected grade of silica fillers for giving a continuous protective coating on the surfaces. They are formulated to sustain weathering, and heavy rains. The coatings are breathable, washable and are long live due to the natural mineral fillers to add to dirt resistant capacity. **Jotex Polyplaster** is applicable with a combination of Trowel and spray coat and should be coated with top coat of **Jotex Polycryl**. A special Dirt shield coat of 'EXTEROL-D' is recommended for extended life of the surface.

PROPERTIES

Test Name	Properties
Volume solid ratio	75 -80%
VOC contents	Low VOC
Density(Fresh)	1.70 +/- 0.05 kg/l
DFT	1.5 - 2 mm
Finish	Bubbel Finish
pH	8 - 10 units
Thinning	Not needed for 1st coat, @ 10 - 15% for 2nd coat (subject to climatic condition)
Disposal	Dried material can be disposed in Municipal

METHOD OF APPLICATION

PREPARATION

- The temperature of the substrate should be min. 10°C and min. 3°C above the dew point of the air, temperature and relative humidity measured in the vicinity of the substrate.

SURFACE PREPARATION

- The substrate must be sound, clean, dry, free from dust, oil, grease and laitance etc. All traces of release agents must be removed. On chalky and dusty surfaces, all loose material must be removed by stiff bristle brushing.

HANDLING

Handle with care. Stir well before use.

APPLICATION

- Trowel- Recommended
- Texture Gun - Recommended

RECOMMENDED APPLICATION AREAS

Concrete surface, cement plaster wall, and dry wall panel surfaces, etc.

FEATURES AND BENEFITS

ADVANTAGES

- Acrylic Based
- Anti-algae and anti fungus
- Water repellent
- Low VOC
- Easy Application
- Cost Effective

COVERAGE - 30 Kg Bucket

55 - 60 sq.ft / bkt. for 2 Coat

SETTING AND CURING

The products set initially by Dry-curing in approximately 3 to 4 hours and the next activity can be taken up after 24 hours of application

POLY PLASTER | 2 Layer Texture Plaster

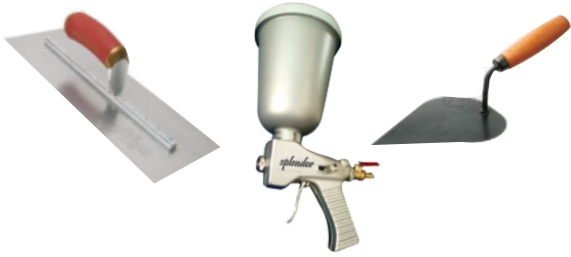
PACKAGING & STORAGE CONDITIONS

Std. Packing is 5 Kg., 30 Kg Buckets
Storage conditions are to keep the containers in a dry, cool, well ventilated space and away from source of heat and ignition. Containers must be kept tightly closed.

POT LIFE & SHELF LIFE

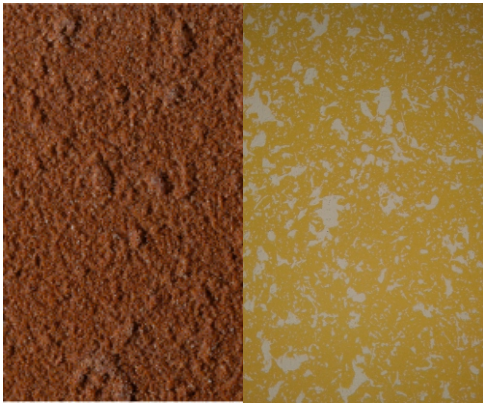
- In open pot 6 to 8 hours in shade (not under direct sunlight)
- 365 days from the date of manufacturing in standard storage warehouse.

TOOLS



HEALTH & SAFETY

Use under well ventilated conditions. Do not breathe or inhale mist. Avoid skin contact. Eyes should be well flushed with water and medical attention sought immediately For detailed information on the health and safety hazards and precautions for use of this product, we refer to the Material Safety Data Sheet.



WallingCo Products

WallingCO Products India LLP

Office 001, Lotus Plaza B, Opp. Karishma Society, Kothrud,
Pune - 411038, Maharashtra, India.
Tel.: + 91 95525 80896 / 97.
Email: order@wallingco.com